

## DOWNLOADING BYALLACCOUNTS DATA IN PORTFOLIOCENTER HOSTED™

One of the more common custodial interfaces used by PortfolioCenter® clients is ByAllAccounts. ByAllAccounts uses an application called Custodial Integrator to aggregate multiple custodians and produce a file that can be consumed by PortfolioCenter. Follow the steps listed below to download ByAllAccounts in PortfolioCenter Hosted.

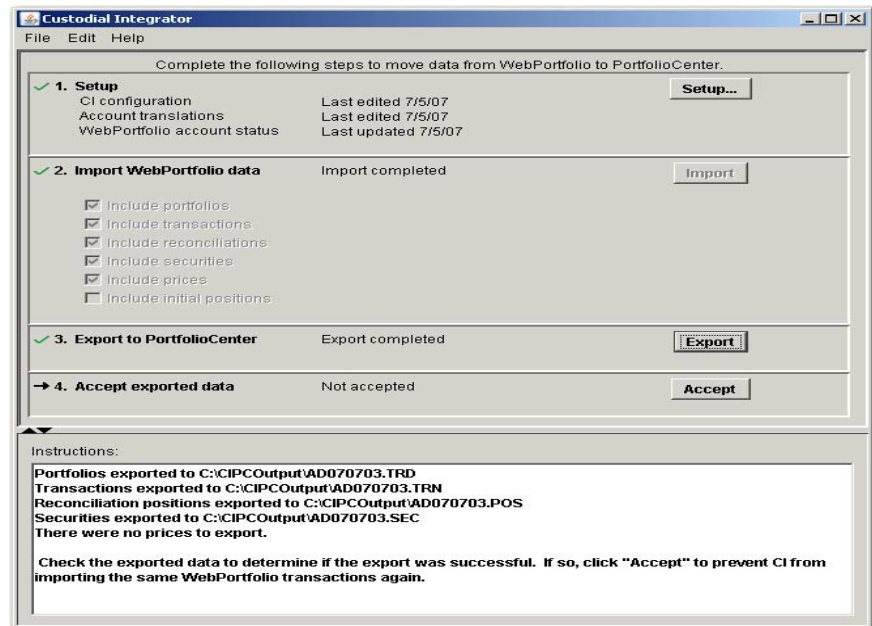


### Important

Custodial Integrator will not be installed in the PortfolioCenter Hosted environment. You will need to manually import the download files into the environment to post in PortfolioCenter.

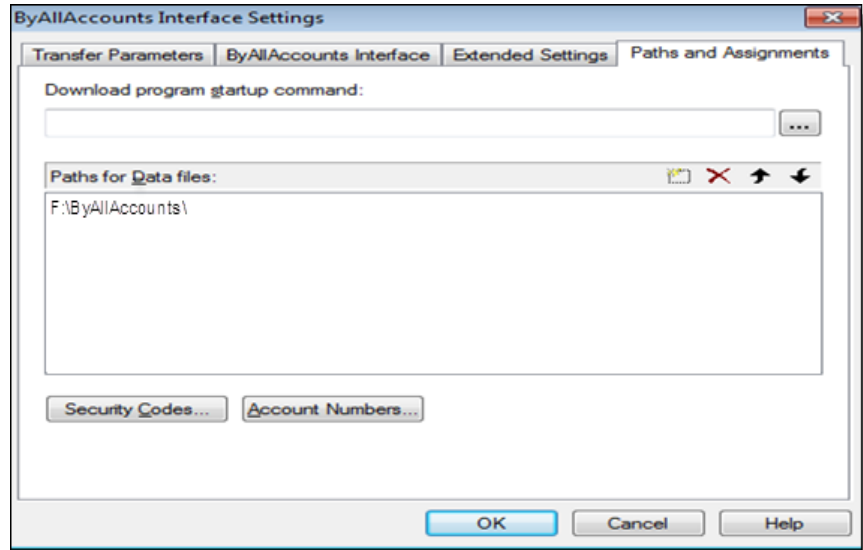
For more information on using Custodial Integrator: contact your ByAllAccounts representative

- 1 Download files from ByAllAccounts Custodial Integrator to your local computer.



- Copy the files downloaded through Custodial Integrator on your local computer to the path specified in the PortfolioCenter Hosted environment.

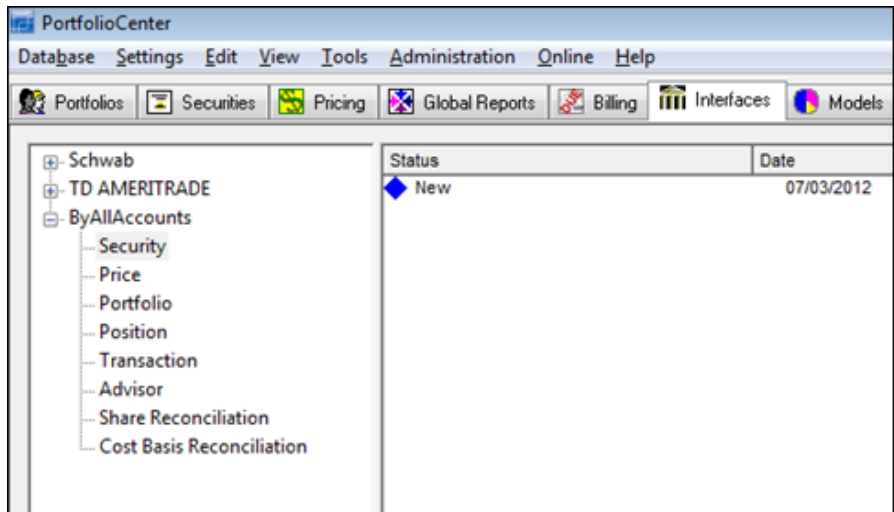
This path is found in PortfolioCenter by clicking on the Interfaces tab, clicking on the ByAllAccounts interface, clicking settings and selecting the Paths and Assignments tab.



**Note**

For more information on copying files in the PortfolioCenter Hosted environment see the [Copying Files in the Portfolio Hosted Environment](#) document.

- After the files have been copied, open PortfolioCenter to view the new interface files.



For institutional audiences only.

© 2013 Schwab Performance Technologies® (“SPT”). All rights reserved

PortfolioCenter Hosted™ is a product of Schwab Performance Technologies® (“SPT”). SPT is a subsidiary of The Charles Schwab Corporation separate from its affiliate Charles Schwab & Co., Inc. (“CS&Co”). CS&Co is a registered broker-dealer and member SIPC that provides brokerage services, while SPT licenses software and provides related technology products and services.

Individual names, account numbers and contact information listed in this document are fictional and not intended to reflect any existing individuals. Both real and fictional securities are listed in the document. Securities and strategies reflected in the presentation are for educational purposes only and are not, nor should they be construed as, recommendations to buy, sell, or continue to hold any investment nor do the accounts listed reflect individual securities accounts or holdings. Any similarity to an existing individual or account is purely coincidental. Screen shots are provided for illustrative purposes only and may be abridged.