

IMPORTING FROM INTERACTIVE DATA PRICING AND REFERENCE DATA FOR PORTFOLIOCENTER HOSTED™

PortfolioCenter® connects to Interactive Data's DATAFEEDSM service to download the following types of information:

- ◆ Historical prices and evaluations for more than 60,000 North American securities, including: equities, mutual funds, options, corporate and government bonds, indexes, GNMA, FNMA, FHLMC, CMOs and unlisted corporate bonds
- ◆ Daily and historical evaluations for more than 1.2 million active municipal bonds
- ◆ Current monthly and historical factors for mortgage-backed securities and CMOs
- ◆ Current and historical prices for international securities, converted to dollars
- ◆ Income and split information
- ◆ Fixed income details, such as bond ratings, yield data, call schedules and variable rates.

The link between PortfolioCenter and DATAFEED gives you great flexibility in requesting information. You can request just prices or just dividends, and you can request that information for only specific security types.



Important

This download can only be completed in the PortfolioCenter Hosted Workstation environment.

BEFORE USING INTERACTIVE DATA PRICING AND REFERENCE DATA

Before you can use Interactive Data Pricing and Reference Data, there are a few steps you should take to ensure your download is successful. In particular you must have:

- ◆ A price file – you can append an existing price file or create a new one.
- ◆ Correct security detail settings

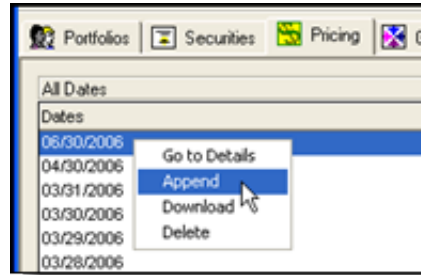
This section shows you how to append an existing price file, create a new price file and add the security detail settings required for downloading.

APPENDING AN EXISTING PRICE FILE

You can append, or add to, an existing price file if you have one for the date you need to download. This option is useful if you are supplementing prices you get from a custodian interface, such as Schwab. Follow the steps below to append an existing price file:

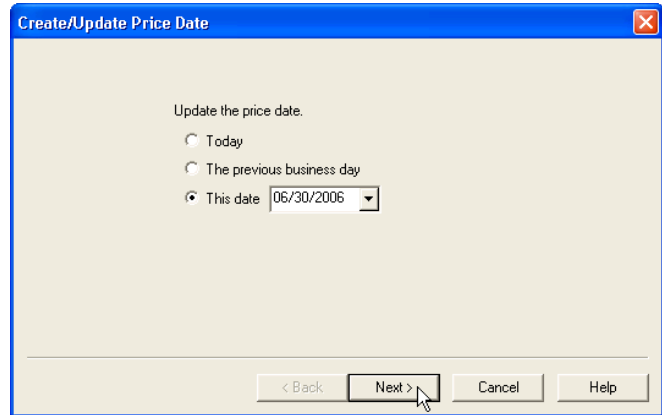
- 1** In PortfolioCenter, click the **Pricing** Tab.

- 2 Right-click on the file you want to update and select **Append** from the menu.



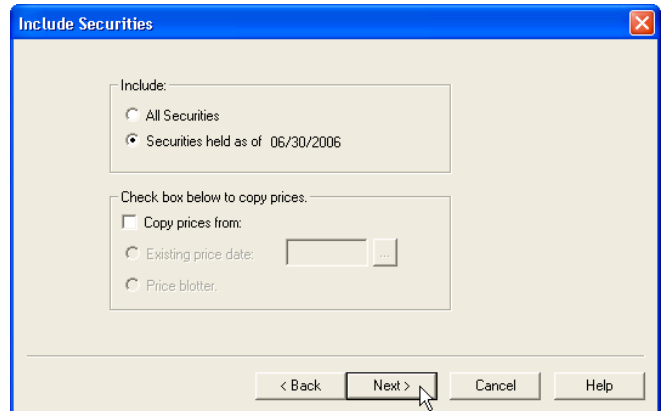
- 3 On the first page of the Create/Update Price Date wizard, select the date, and then click **Next**.

Since you are updating an existing price file, the **This Date** option should be selected and the date you selected in Step 2 should already be in the field.



- 4 On the Include Securities page, select the securities you want to include in the price file and whether or not to copy prices. Click **Next**.

- ♦ For the securities to include, you can either include all securities in the database, or just the securities held as of the date selected. By default, **Securities held as of (date)** is selected.
- ♦ For the copy prices option, check the **Copy prices from** box if you want to copy prices for securities from a previous date.

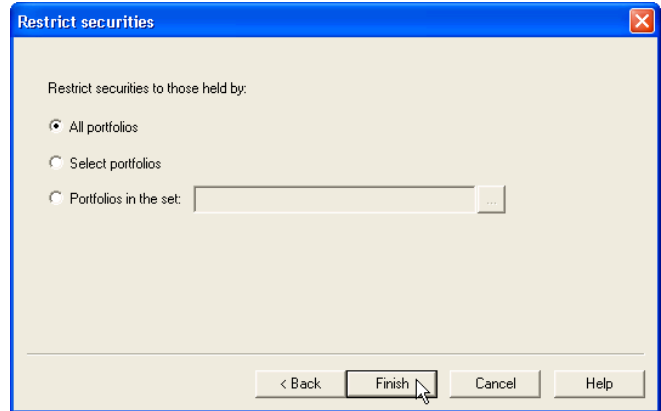


Important

It is best to keep the **Copy prices from** box unchecked because DATAFEED needs a Not Updated status to send prices. If you copy prices, the status becomes Copied and those securities are not downloaded.

- 5 Finally, select the portfolios whose assets you want to include in the new price file.

Click **Finish** to update the price file.

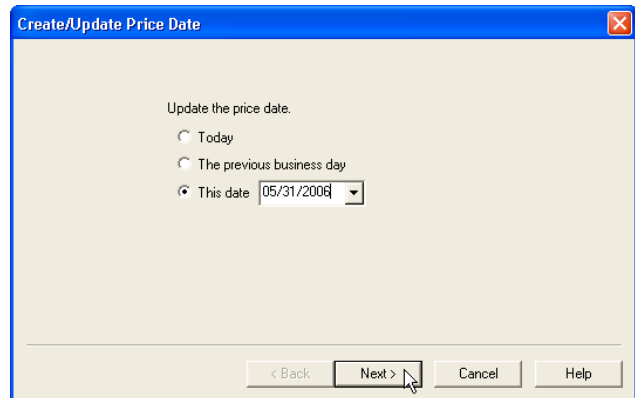


ADDING A NEW PRICE FILE

If the price file doesn't exist for the date you need prices, you must create a new one. This option is useful if you are downloading prices for historical dates or dates prior to setting up your custodian interface. Follow the steps below to append an existing price file:

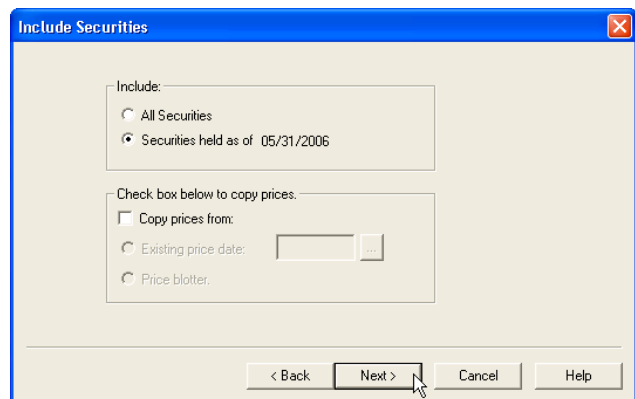
- 1 In PortfolioCenter, click the **Pricing** tab.
- 2 Click the **New** button, located at the bottom of the window.
- 3 On the first page of the Create/Update Price Date wizard, select the date you want to create a file for, and then click **Next**.

Since you are creating a new file, the **Today** option should be selected. Most likely, you are creating a file for a previous date. If so, select **This Date** and enter the date for which you want to create the file.



On the Include Securities page, select the securities you want to include in the price file and whether or not to copy prices. Click **Next**.

- ♦ For the securities to include, you can either include all securities in the database, or just the securities held as of the date selected. By default, **Securities held as of (date)** is selected.
- ♦ For the copy prices option, check the **Copy prices from** box if you want to copy prices for securities from a previous date.



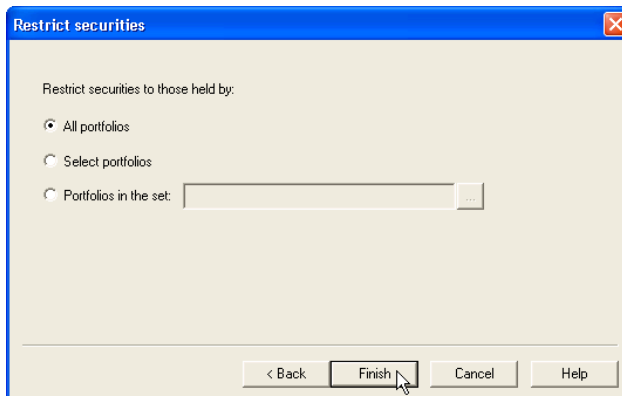


Important

It is best to keep the **Copy prices from** box unchecked because DATAFEED needs a Not Updated status to send prices. If you copy prices, the status becomes Copied and those securities are not downloaded.

Finally, select the portfolios whose assets you want to include in the new price file.

Click **Finish** to create the price file.

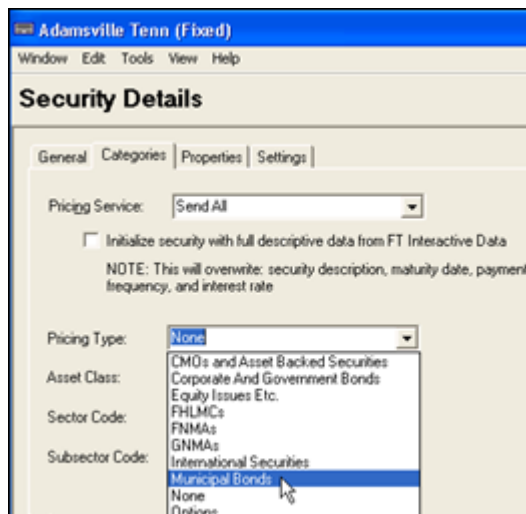


EDITING SECURITY DETAILS

On the Categories tab of the security details, there are a few settings that can control whether or not a request for the symbol is sent and how much information is received for fixed income security types.

FIXED INCOME AND MORTGAGE BACKED SECURITIES

- ◆ **Pricing Service:** change this setting to IDC Price if you download prices from other sources, such as Dial Data. Otherwise, you can leave the setting as Send All, which is the default.
- ◆ **Initialize Security:** Check this box if you are downloading detail information for the fixed income or mortgage-backed securities for the first time. After you download, this box becomes unchecked.
- ◆ **Pricing Type:** Select the type of security you are pricing. For example, municipal bonds, corporate and government bonds, and so on.



ALL OTHER SECURITIES

- ♦ **Pricing Service:** change this setting to IDC Price if you download prices from other sources, such as Dial Data. Otherwise, you can leave the setting as Send All, which is the default.
- ♦ **Pricing Type:** Select the type of security you are pricing. For example, equity issues, options, international securities, and so on.



USING THE INTERACTIVE DATA PRICING AND REFERENCE DATA WIZARD



Important

The screen shots and steps assume you are choosing all options in the wizard. If you make selections other than what are listed here, some of your options might not appear in the same order.

- 1 In PortfolioCenter, click the **Pricing** tab.
- 2 Select the price file you want to download information for, and then click **Go To Details**.
- 3 In the price file details, click the **Download** button.
- 4 Select Interactive Data, and then click **Next**.
- 5 In the Activity window, select the appropriate settings:

Select **Download** if you want to download information. If you select download, select what you want download:

- ♦ Check **Prices for the selected price date** to download prices for assets in the price file for the selected date.
- ♦ Check **Descriptive or yield data for fixed income assets** to download descriptive and yield information for fixed income securities.
- ♦ Check the **Do not send securities that are already priced** box if you are supplementing data from other sources, such as an interface.

Select **Repost the Last Download** option if you want to repost information from the last download.

Select **View Download Status Report** to view the status report from your last download.

- 6 Click **Next**.

Activity

Which Interactive Data activity would you like to perform?

Download

- Prices for the selected price date
- Descriptive or yield data for fixed income assets

Price Status:

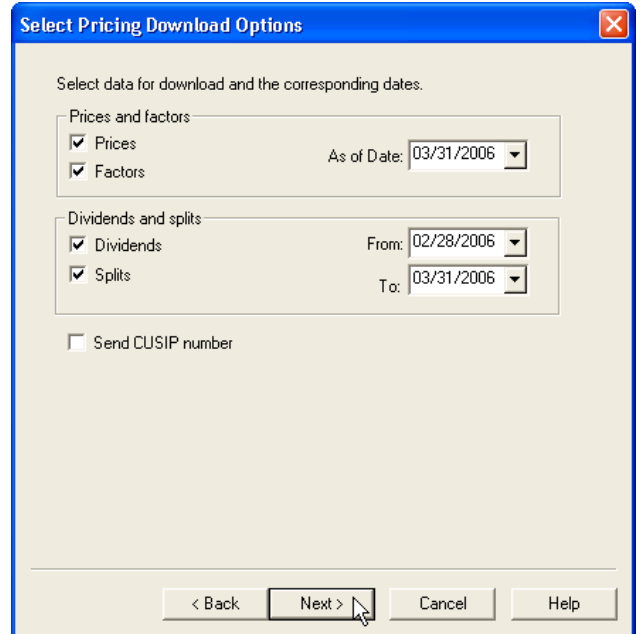
Do not send securities that are already priced

Repost the last download

View download status report

< Back Next > Cancel Help

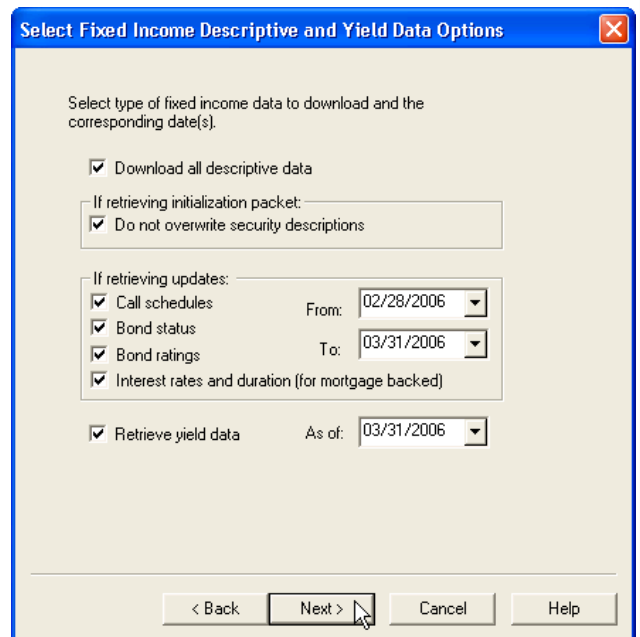
- 7 In the Select Pricing Download Options, select the appropriate settings:
- ◆ Check the **Prices** box to download prices.
 - ◆ Check the **Factors** box to download factors for mortgage-backed securities.
 - ◆ Select the **As Of Date** for the prices. By default, it should be the same date as the price file you selected.
 - ◆ Check the **Dividends** box to download dividends for the securities in the price file.
 - ◆ Enter the **From** date for dividends.
 - ◆ Check the **Splits** box to download split information for the securities in the price file.
 - ◆ Enter the **To** date for splits.
 - ◆ Check the **Send CUSIP** number box to send the security's CUSIP number (in the CUSIP field of the security details). If the CUSIP field is blank, the security symbol is sent instead.



8 Click **Next**.

9 In the Select Fixed Income Descriptive and Yield Data Options window, select the appropriate settings:

- ◆ Check the **Download all descriptive data** to download extended descriptive data for fixed income.
- ◆ Check the **Do not overwrite security descriptions** box if you are receiving the initialization packet and want to keep the descriptions you already have in PortfolioCenter.
- ◆ Check the **Call schedules** box to download call schedules for bonds.
- ◆ Check the **Bond status** box to download the bond status.
- ◆ Check the **Bond ratings** box to download bond ratings.
- ◆ Check the **Interest rates and duration** box to download interest rates for bonds and duration information for mortgage-backed securities.



- ◆ Enter **From** and **To** dates for the updates to call schedules, bond status, bond ratings and/or interest rates and duration.
- ◆ Check the **Retrieve yield data** box to get yield information for the securities.
- ◆ Enter an **As of** date for the yield data.

10 Click **Next**.

11 Check the **Write transactions to transaction list** box to save the transactions to a list so you can review them before posting them.

- ◆ If you select to create a new transaction list, enter the transaction list name and description.
- ◆ If you add to an existing transaction list, select the transaction list name by clicking the browse button or pressing <F4>.

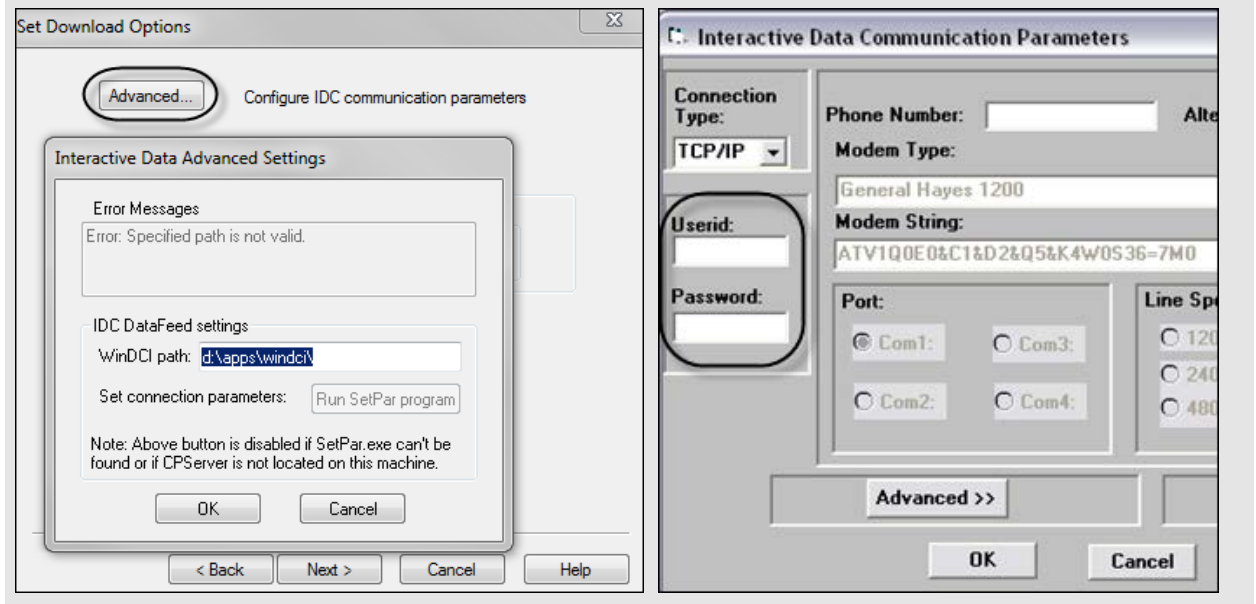
12 Click **Next**.

13 In the Select Download Options window, select **Immediately**, and then click Next.

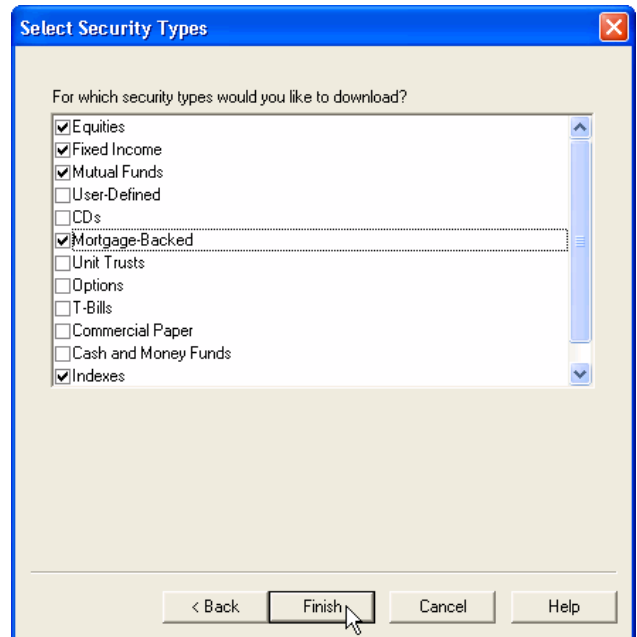


Important

The first time you download from Interactive Data, you must configure the advanced settings in the SetPar program to add IDC user id and password information.



- 14 Select the security types you want to download information for, and then click **Finish** to start the download.



For institutional audiences only.

© 2013 Schwab Performance Technologies® ("SPT"). All rights reserved

PortfolioCenter Hosted™ is a product of Schwab Performance Technologies® ("SPT"). SPT is a subsidiary of The Charles Schwab Corporation separate from its affiliate Charles Schwab & Co., Inc. ("CS&Co"). CS&Co is a registered broker-dealer and member SIPC that provides brokerage services, while SPT licenses software and provides related technology products and services.

Individual names, account numbers and contact information listed in this document are fictional and not intended to reflect any existing individuals. Both real and fictional securities are listed in the document. Securities and strategies reflected in the presentation are for educational purposes only and are not, nor should they be construed as, recommendations to buy, sell, or continue to hold any investment nor do the accounts listed reflect individual securities accounts or holdings. Any similarity to an existing individual or account is purely coincidental. Screen shots are provided for illustrative purposes only and may be abridged.