

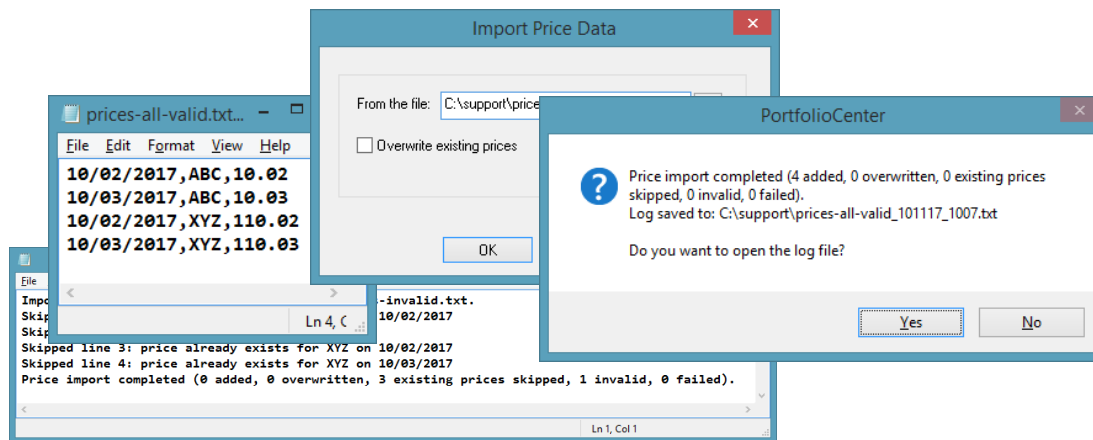
PortfolioCenter® 5.14.100.1 Release Notes

Release notes include information about new enhancements, resolved issues, and known issues.

Pricing Data Manager

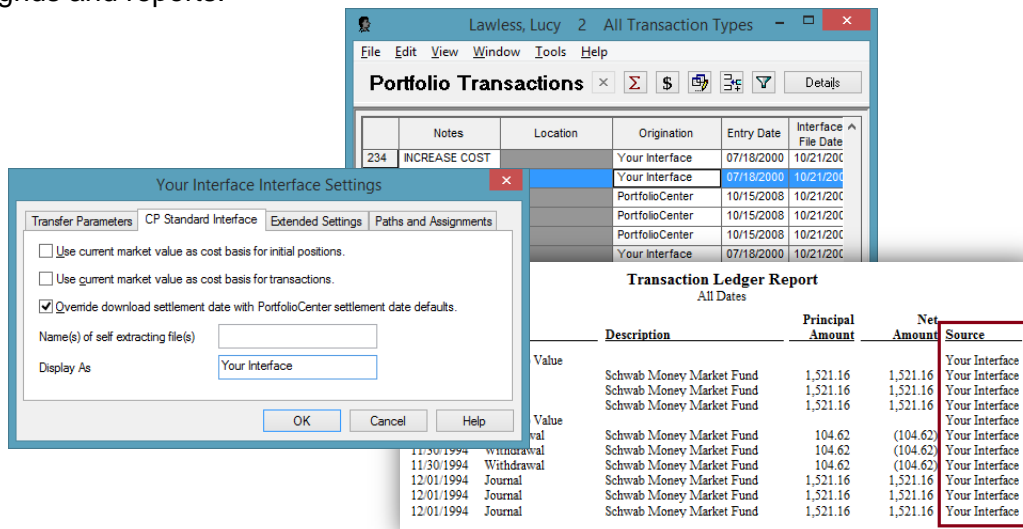
The new pricing data manager has the following features and functionality:

- Supports importing prices for multiple dates
- Overwriting existing price data is optional
- Tool will display an import summary and generate a log file



Standard Interface Display Name

PortfolioCenter 5.12 introduced a way to customize the standard interface names, which only affected the interface list. In PortfolioCenter 5.14, this custom 'Display As' name now shows in the transaction grids and reports.



'Top X' Holdings in Client Presentations

The holdings table element was updated to support limiting the number of positions shown when sorted by current value.

Maximum Number of Positions
The maximum number of detailed positions to display on the element. This setting is enabled only if unmanaged assets are treated as managed, position details are shown, and positions are sorted by value. If this value is specified, grouping by account.

Weight	Symbol	Description	Quantity	Price	Current Value
10.4%	MRK	Merck	300.000	\$86.00	\$25,800.00
9.3%	DFSVX	DFA Small Cap Value Fund	1,328.977	\$17.29	\$22,978.01
7.6%	CSRSX	Cohen & Steers Realty SH	410.812	\$45.53	\$18,695.16
7.4%	PRITX	T.Rowe Price Intl Stook	1,318.900	\$13.82	\$18,227.20
6.6%	PRFDX	T.Rowe Price Equity Inc.	702.723	\$23.24	\$16,331.28
5.8%	INTC	Intel Corp.	100.000	\$144.06	\$14,406.25
5.8%	ATS.F	A T & T CORP 5.125%01/04/01/2001 5.125% Accrued Income	15,000.000	\$94.38	\$14,158.25
					\$230.20
5.8%	LDNRX	Lindner Growth Fund	570.229	\$25.18	\$14,358.37
5.5%	PTRTX	Pimco Total Return Fund	1,304.870	\$10.45	\$13,633.80
4.8%	SGENX	Sogen International Fund	451.029	\$26.55	\$11,974.82

Transaction Ledger in Client Presentations

Transaction table elements and Transaction Ledger Sample page added to client facing presentation package (Version 358). The element properties are based on the analytical Transaction Ledger report.

Transaction Ledger
Period Ending: 11/01/2010
Portfolio Inception Date: 11/01/2000

Trade Date	Activity	Description	Quantity	Principal Amount	Accrued Paid (Beneficial)	Total Fees	Net Amount	Money ID
01/01/2010	Activity	Description	127.000	\$126.00	\$126.00	\$126.00	\$12.00	Money-ID
01/01/2010	Activity	Description	127.000	\$126.00	\$126.00	\$126.00	\$12.00	Money-ID
01/01/2010	Activity	Description	127.000	\$126.00	\$126.00	\$126.00	\$12.00	Money-ID
Total							\$360.00	

Display Element Title
A True/False setting controlling whether the element title displays on the page.

Page Description
Page displaying portfolio or group transactions.

Last Trade Date Column

The Last Trade Date column can be added to the following reports and exports:

Portfolio Reports

- Portfolio Statement
- Portfolio Holdings
- Portfolio Position Analysis
- Yield Analysis
- Unrealized Gains/Losses
- Unrealized Gains/Losses Date-to-Date

Global Reports

- Master List
- Portfolio Statement

PortfolioCenter Export Wizard

- Position Export
- Position Export – Combined Group Positions
- Trade Lot Export

Portfolio Statement							
Description	Quantity	Cost Basis	Unit Cost	Current Value	Current Price	Unrealized Gain (Loss)	Last Trade Date
Managed Assets							
Equities							
Telescopic Laboratories	250	20,000.00	80.000	18,810.00	75.240	(1,190.00)	01/17/2005
Mutual Funds							
21st Growth & Income Fund	3,642.528	50,274.17	13.802	93,722.25	25.730	43,448.08	10/31/2001
21st Large Cap Fund	4,181.915	71,912.31	17.196	86,231.09	20.620	14,318.78	09/26/2001
Best Fund	8,450.417	6,520.95	0.772	54,167.17	6.410	47,646.22	11/07/2001
Gov't Fund	5,205.23	50,612.99	9.723	55,695.96	10.700	5,082.97	10/31/2001
Small Cap Fund	1,560.755	48,500.00	31.075	52,659.87	33.740	4,159.87	02/18/2001
Strategic Select Income	8,113.818	50,835.41	6.265	55,011.69	6.780	4,176.28	10/31/2001
World Fund	3,370.036	121,160.45	35.952	134,329.63	39.860	13,169.18	02/18/2001
		399,816.28		531,817.66		132,001.38	
Cash and Money Funds							
Stone Money Market		*****		(325,930.09)			01/17/2005
				93,886.19		224,697.57	
						130,811.38	

Interface Changes

Schwab Core Interface:

- Cash Merger transactions are combined into a single Sell transaction; previously they were two transactions: Sell and Deposit
- Added support for Litigation transactions (LITCREDIT); these transactions are treated as an Income activity

DST Fan Mail Interface:

- Added support for Third Party Advisory Fee transactions; these transactions are treated as an Expense activity.

Resolved Issues

- When “Combine Group Positions” is checked, only positions where their time periods overlap are combined
- If there is neither an issue date nor a first coupon date for a Certificate of Deposit (CD) and there are multiple trade lots of the CD in a portfolio, the earliest settlement date is used as the coupon cycle start date to calculate Accrued Interest
- Dividends from short positions are correctly treated as negative values for performance reports
- Qualified and Non-Qualified Dividends are correctly displayed in Transaction Ledger depending on selected activity types
- When updating portfolios by importing comma-separated values (CSV) files from the Portfolio Data Manager, it uses a unique ID to find matching portfolios to correctly update their information
- When importing CSV files from the Portfolio Data Manager, it correctly imports selection fields such as Custodian, Billing Specification, etc.
- Fixed several memory leak issues around Interfaces, Adjust Mutual Fund Accounting tool, Cost Basis Reset Wizard, and Batch Presentations
- PortfolioCenter Management Console correctly displays Microsoft SQL Server versions for 2014, 2016, and 2017

Miscellaneous Changes

- Market Holidays for 2018, 2019, and 2020 were added

For institutional audiences only.

© 2017 Schwab Performance Technologies® (“SPT”). All rights reserved

PortfolioCenter® is a product of Schwab Performance Technologies® (“SPT”). SPT is a subsidiary of The Charles Schwab Corporation separate from its affiliate Charles Schwab & Co., Inc. (“CS&Co”). CS&Co is a registered broker-dealer and member SIPC that provides brokerage services, while SPT licenses software and provides related technology products and services. PortfolioCenter® is a product of SPT.

Individual names, account numbers and contact information listed in this document are fictional and not intended to reflect any existing individuals. Both real and fictional securities are listed in the document. Securities and strategies reflected in the document are for educational purposes only and are not, nor should they be construed as, recommendations to buy, sell, or continue to hold any investment nor do the accounts listed reflect individual securities accounts or holdings. Any similarity to an existing individual or account is purely coincidental. Screen shots are provided for illustrative purposes only and may be abridged.